

SITE BENCH MARK #45
 "+ N. B.B. Of Hydrant
 N.E. Corner Of Washington &
 Webster, Elev.=685.00

SITE BENCH MARK #58
 "+ E./ B.B. Of Hydrant
 N.E. Corner Of Washington &
 Scott, Elev.=684.22

304 W. Washington St.
 2 Story Brick

232 W. Washington St.
 Lot 158

Lot 157

Lot 156

Lot 155

206 W. Washington St.
 Post Office 1 Story
 Lot 154

136 W. Washington St.
 2 Story Brick

303 W. Washington St.
 2 Story Stone

231 W. Washington St.
 2 Story Wood
 Lot 149

223 W. Washington St.
 2 Story Wood
 Lot 150

217 W. Washington St.
 2 Story Brick (2 Apt.)
 Lot 151

Lot 152

625 Scott St.
 Lot 153

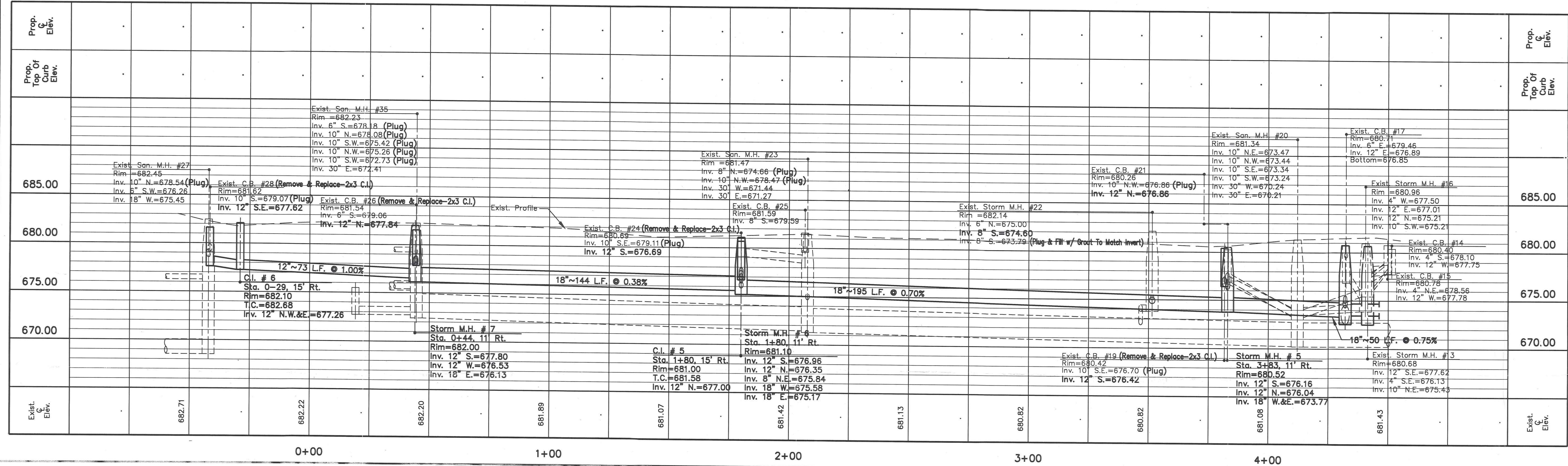
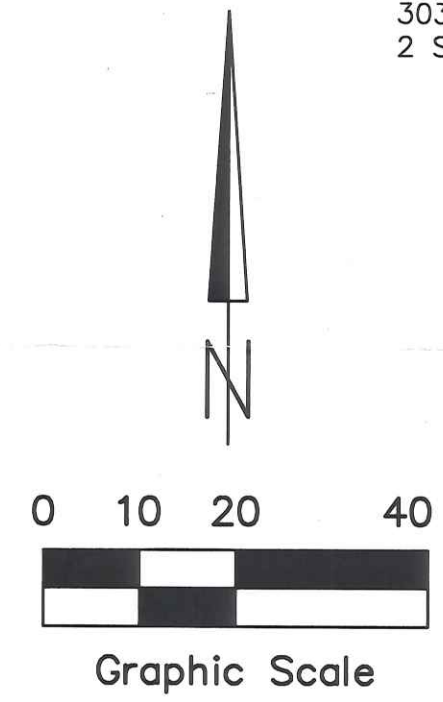
Lot 5

Clinton St. Fd. P.K. W/Shinner

Webster St.

Scott St.

W. WASHINGTON STREET



Date: 04/03/97	Scale: 1"=20'	Drawing Name: WASHPPA	Drawn By: M.B.S.	Approved By: A.C.H.
			Checked By: A.C.H.	
			Revision: Addendum #1	
No. 1 7/22/98		City Of Napoleon Engineering Department 255 W. Riverview Ave., P.O. Box 151 Napoleon, Ohio 43545 Phone: (419) 592-401C Fax: (419) 599-8393	City Engineer	
No. 2 9/9/97			City Engineer	
No. 3 3/3/99			City Engineer	
Prepared By: City Of Napoleon Engineering Department Adam C. Hoff, P.E.				
Moved Proposed 24" Storm Sewer Under Pavement As Built Plans				